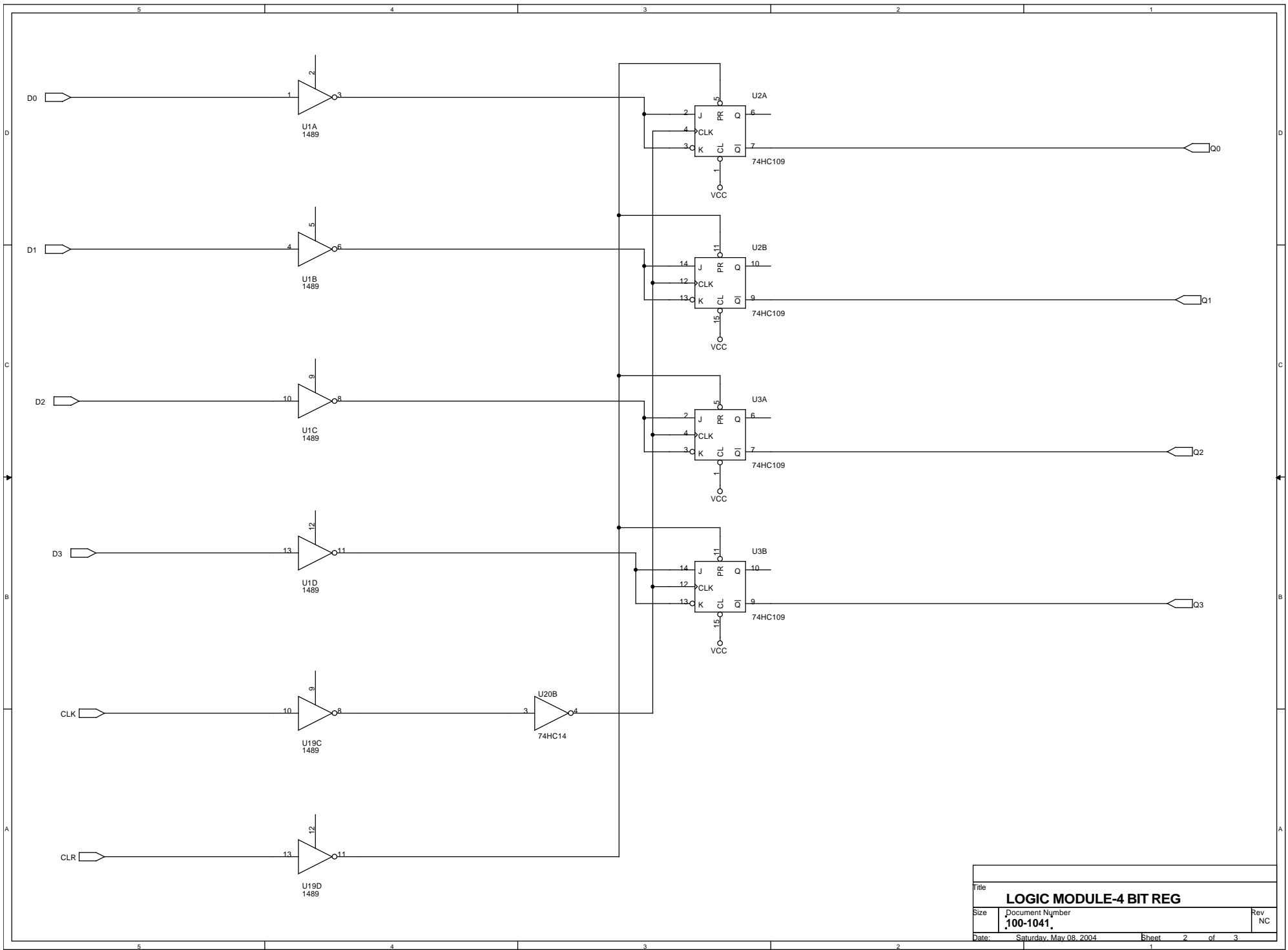
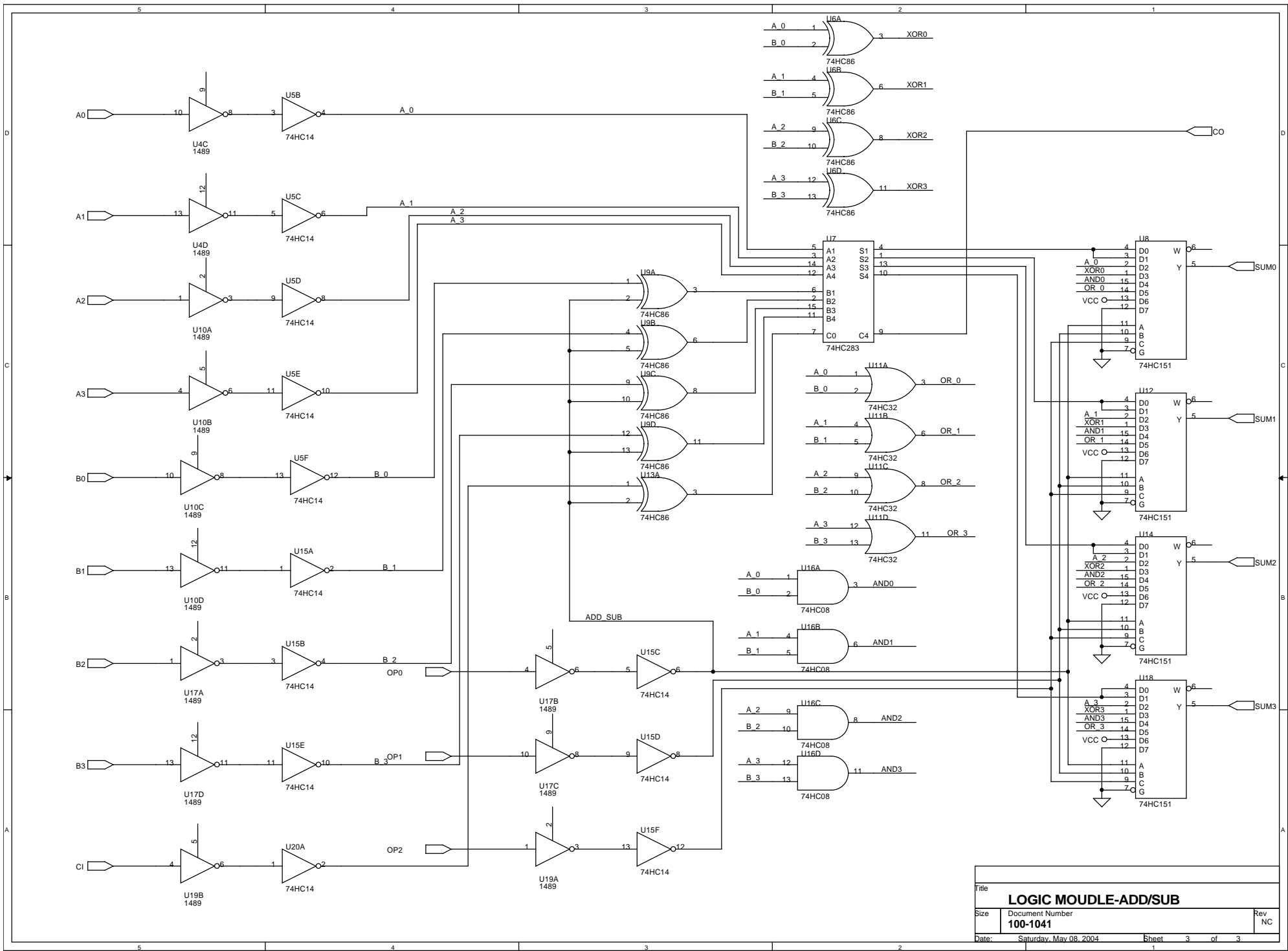


Title		
LOGIC MOUDLE-ADDER/REG		
Size	Document Number	Rev
	100-1041	NC
Date:	Saturday, May 08, 2004	Sheet 1 of 3



Title		
LOGIC MODULE-4 BIT REG		
Size	Document Number	Rev
	100-1041	NC
Date:	Saturday, May 08, 2004	Sheet 2 of 3



Title		
LOGIC MOUDLE-ADD/SUB		
Size	Document Number	Rev
	100-1041	NC
Date:	Saturday, May 08, 2004	Sheet 3 of 3

1: Revised: Saturday, May 08, 2004

2: Revision:

3:

4:

5:

6:

7:

8:

9:

10: Bill Of Materials July 3,2004 13:18:20 Page1

11:

12: Item Quantity Reference Part

13: _____

14:

15: 1 25 C1,C2,C3,C4,C5,C6,C7,C8, .1uF

16: C9,C10,C11,C12,C13,C14,

17: C15,C16,C17,C18,C19,C20,

18: C21,C22,C23,C24,C25

19: 2 2 JP1,JP2 HEADER 10X2

20: 3 2 JP6,JP3 HEADER 8X2

21: 4 2 JP5,JP4 HEADER 4

22: 5 8 R1,R2,R3,R4,R5,R6,R7,R8 470

23: 6 5 U1,U4,U10,U17,U19 1489

24: 7 2 U2,U3 74HC109

25: 8 3 U5,U15,U20 74HC14

26: 9 3 U6,U9,U13 74HC86

27: 10 1 U7 74HC283

28: 11 4 U8,U12,U14,U18 74HC151

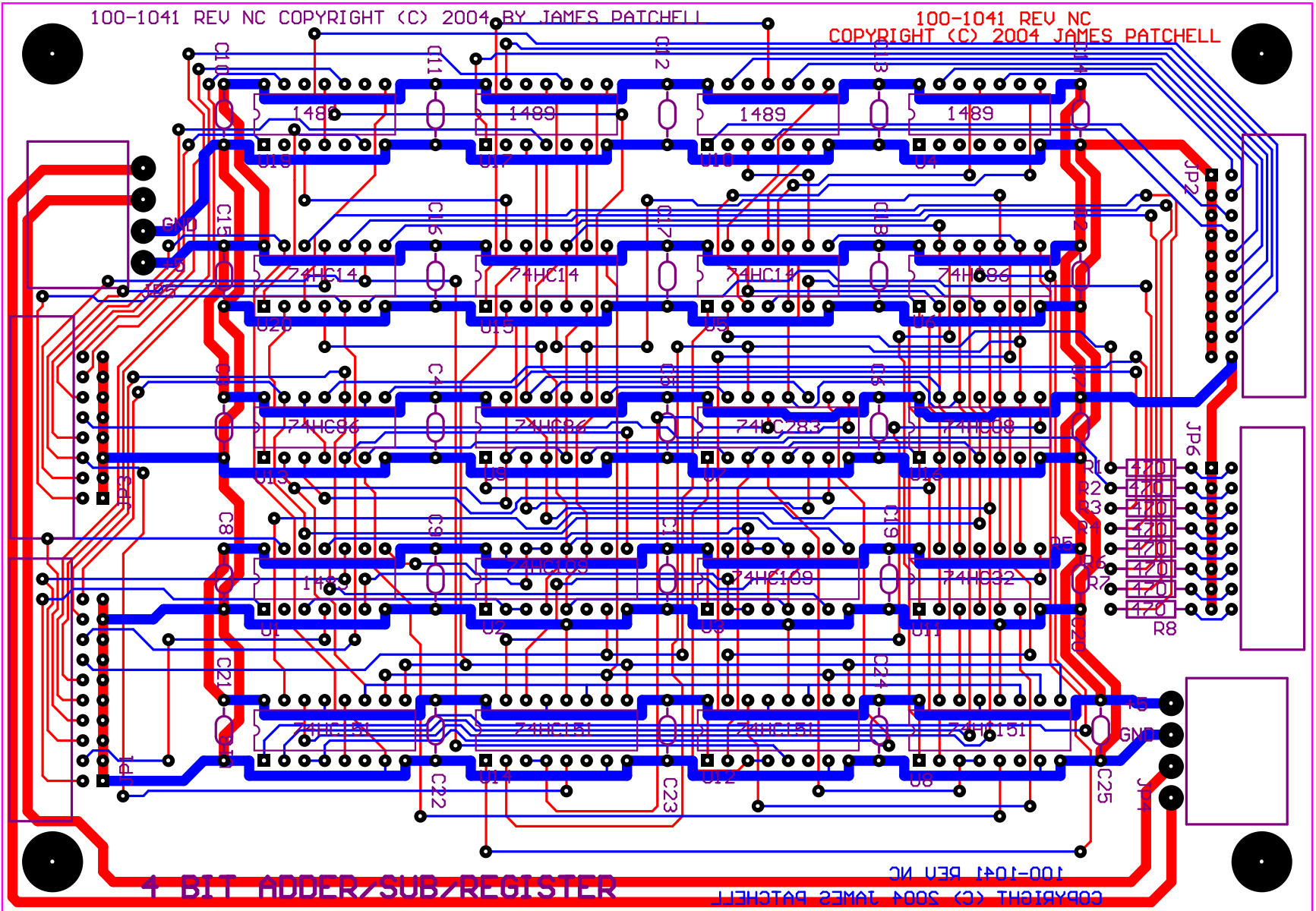
29: 12 1 U11 74HC32

30: 13 1 U16 74HC08

31:

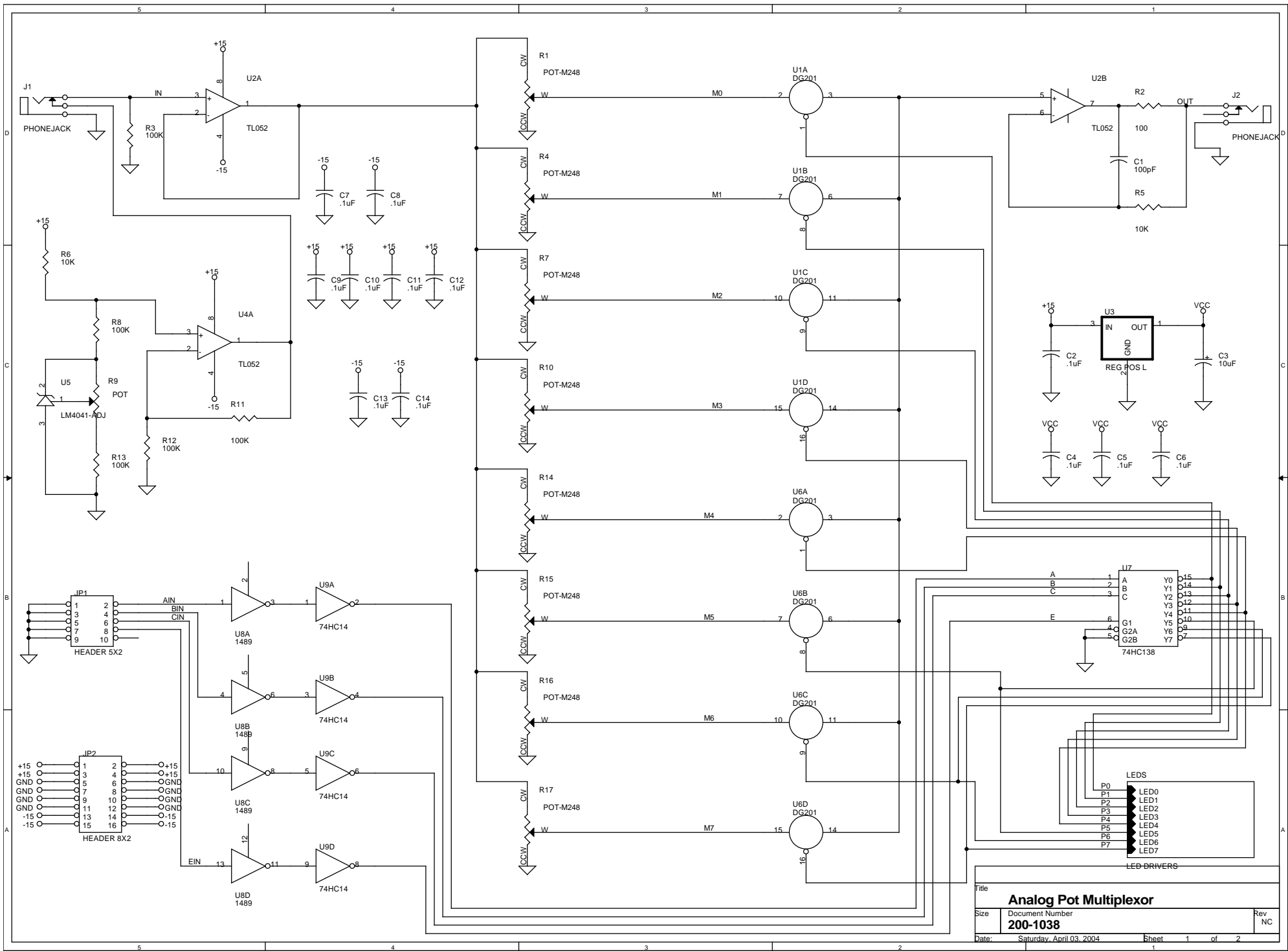
100-1041-06 REV NC FAB DRAWING
100-1041-05 REV NC COMPONENT LEGEND

100-1041-02 REV NC COMPONENT SIDE
100-1041-01 REV NC CIRCUIT SIDE

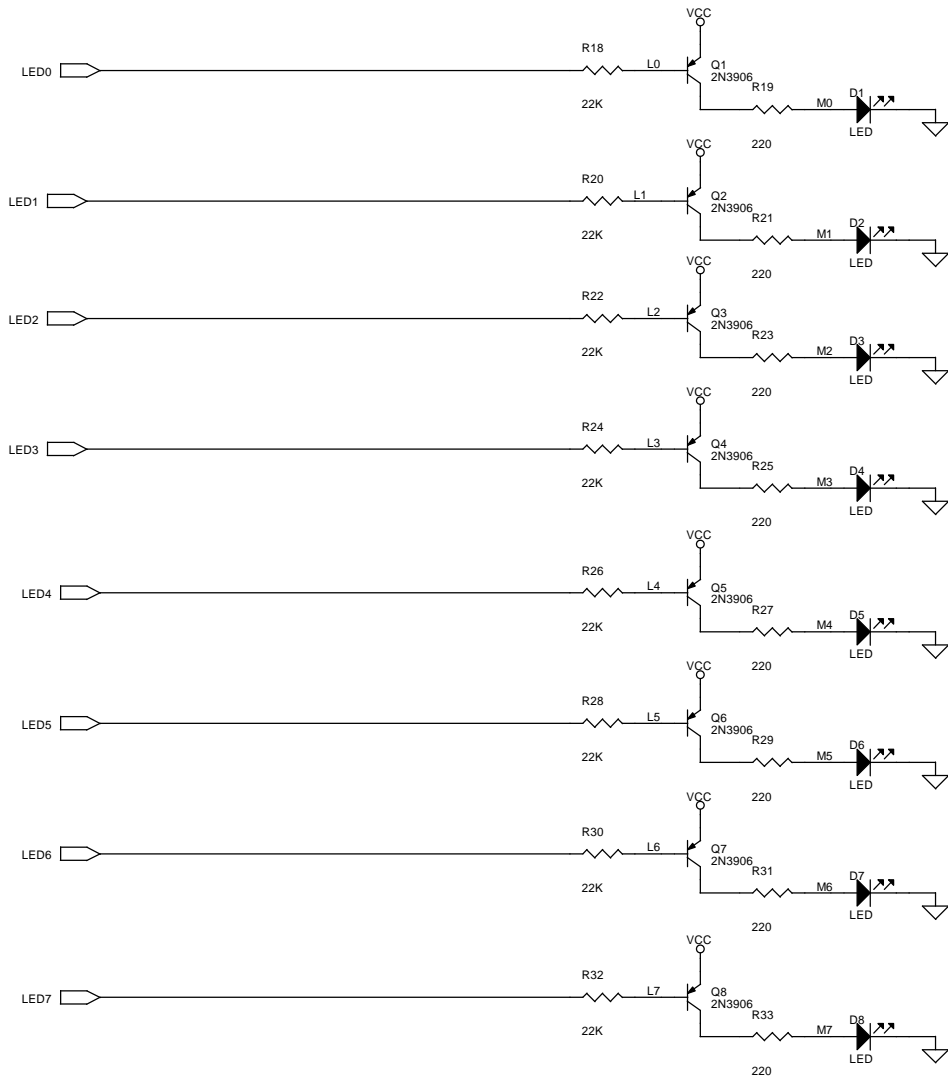


6500mil

4500mil



Title		
Analog Pot Multiplexor		
Size	Document Number	Rev
	200-1038	NC
Date:	Saturday, April 03, 2004	Sheet 1 of 2



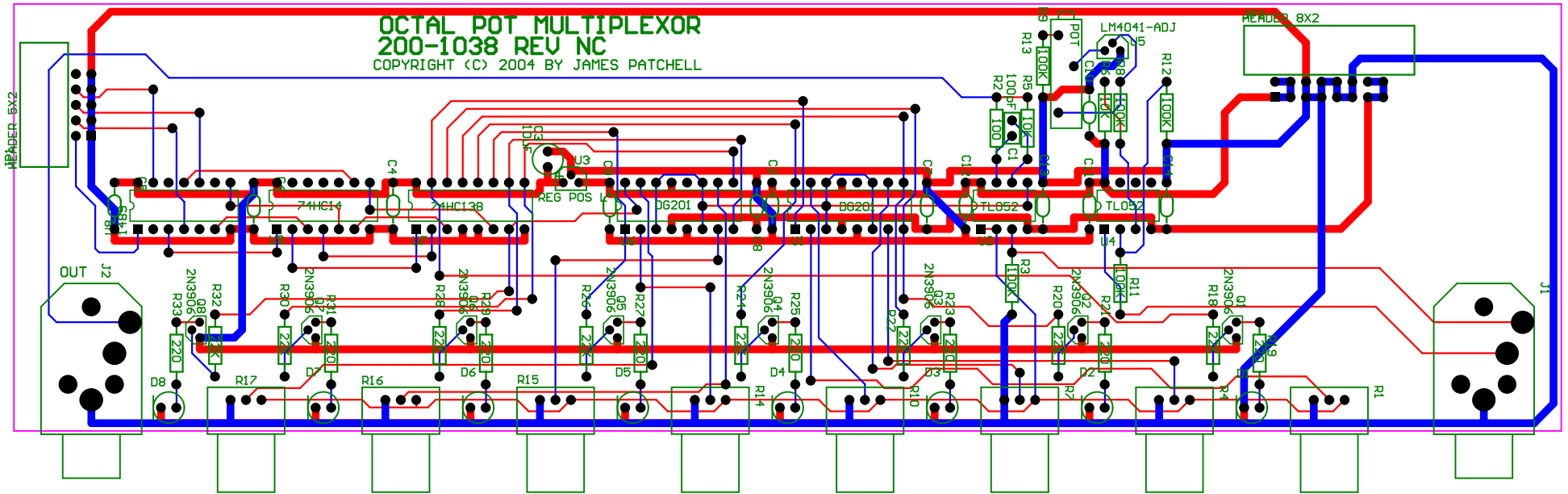
Title		
ANALOG POT MULTIPLEXOR		
Size	Document Number	Rev
	200-1038	NC
Date:	Saturday, April 03, 2004	Sheet 2 of 2

200-1038-05 REV NC COMPONENT LEGEND

200-1038-02 REV NC COMPONENT SIDE

500-1038-01 REV NC CIRCUIT SIDE

OCTAL POT MULTIPLEXOR
200-1038 REV NC
COPYRIGHT (C) 2004 BY JAMES PATCHELL



1: Analog Pot Multiplexor Revised: Monday, May 24, 2004
2: 200-1038 Revision: NC
3:
4:
5:
6:
7:
8:
9:

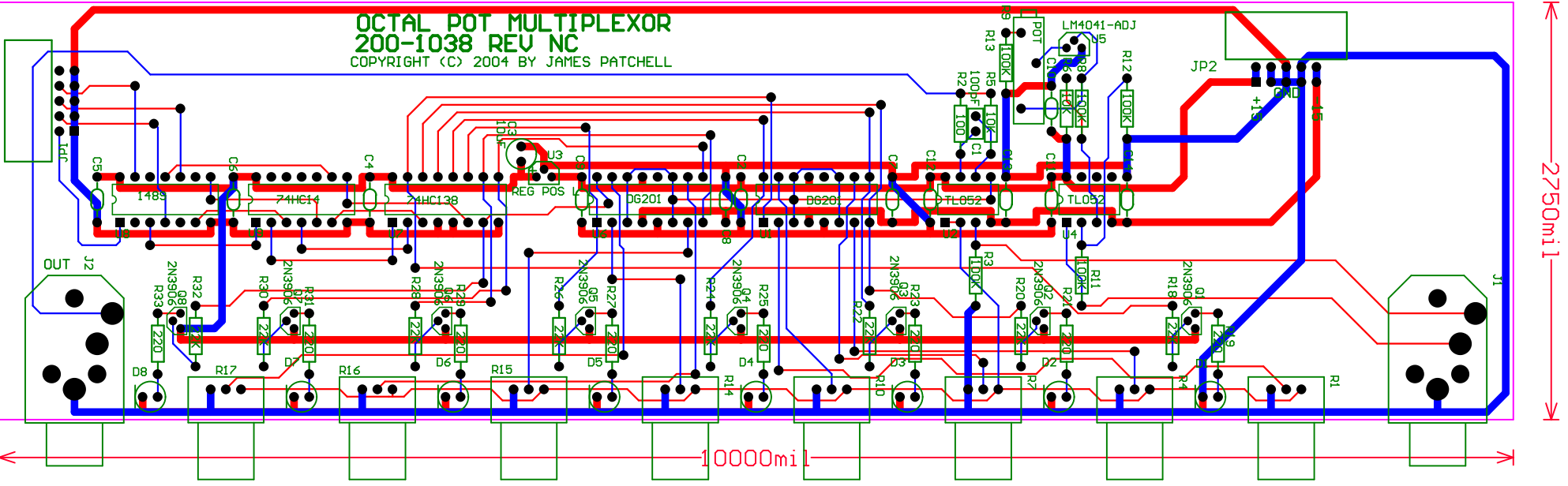
10: Bill Of Materials July 5,2004 9:34:40 Page1

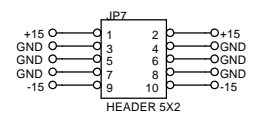
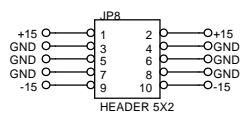
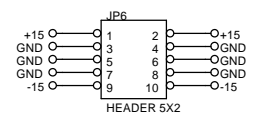
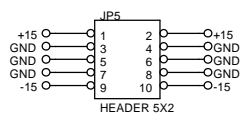
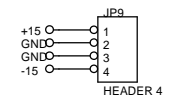
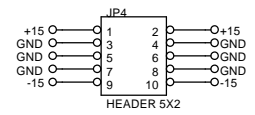
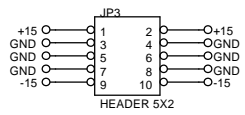
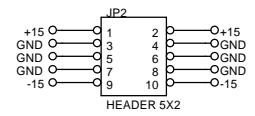
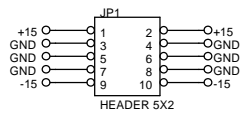
11:
12: Item Quantity Reference Part
13: _____
14:

15:	1	1	C1	100pF	
16:	2	12	C2,C4,C5,C6,C7,C8,C9,C10,	.1uF	
17:			C11,C12,C13,C14		
18:	3	1	C3	10uF	
19:	4	8	D1,D2,D3,D4,D5,D6,D7,D8	LED	
20:	5	2	JP1,JP2	HEADER 5X2	
21:	6	2	J1,J2	PHONEJACK	
22:	7	8	Q1,Q2,Q3,Q4,Q5,Q6,Q7,Q8	2N3906	
23:	8	8	R1,R4,R7,R10,R14,R15,R16,	POT-M248	
24:			R17		
25:	9	1	R2	100	
26:	10	5	R3,R8,R11,R12,R13	100K	
27:	11	2	R5,R6	10K	
28:	12	1	R9	POT	
29:	13	8	R18,R20,R22,R24,R26,R28,	22K	
30:			R30,R32		
31:	14	8	R19,R21,R23,R25,R27,R29,	220	
32:			R31,R33		
33:	15	2	U1,U6	DG201	
34:	16	2	U4,U2	TL052	
35:	17	1	U3	REG POS L	
36:	18	1	U5	LM4041-ADJ	
37:	19	1	U7	74HC138	
38:	20	1	U8	1489	
39:	21	1	U9	74HC14	
40:					

200-1038-06 REV NC FAB DRAWING
200-1038-05 REV NC COMPONENT LEGEND

200-1038-02 REV NC COMPONENT SIDE
200-1038-01 REV NC CIRCUIT SIDE





Title		
<Title>		
Size	Document Number	Rev
Custom	<Doc>	<RevCode>
Date:	Monday, May 24, 2004	Sheet 1 of 1

1: Revised: Monday, May 24, 2004
2: Revision:
3:
4:
5:
6:
7:
8:
9:

10: Bill Of Materials July 5,2004 9:34:07 Page1

11:

12: Item Quantity Reference Part

13: _____

14:

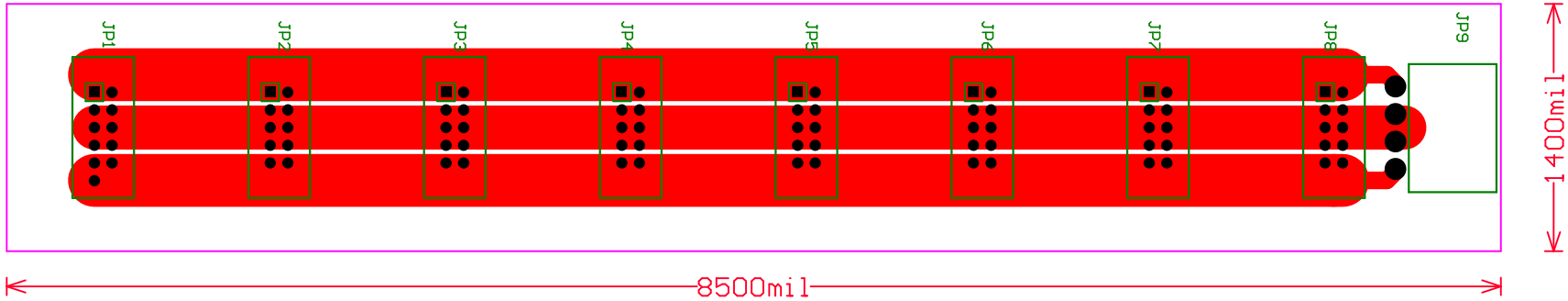
15: 1 8 JP1,JP2,JP3,JP4,JP5,JP6, HEADER 5X2

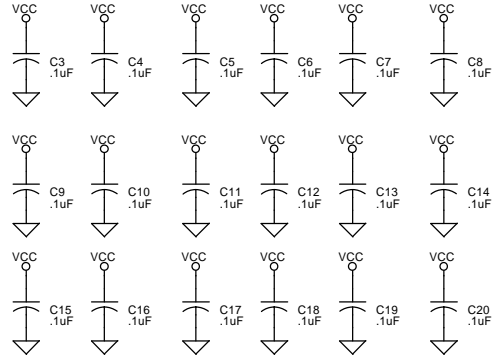
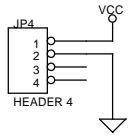
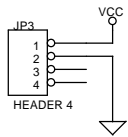
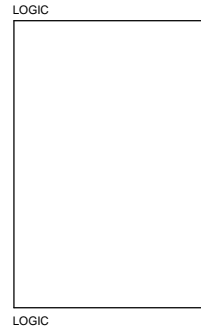
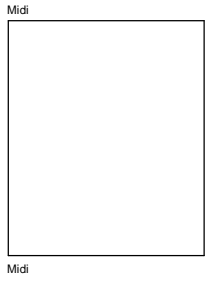
16: JP7,JP8

17: 2 1 JP9 HEADER 4

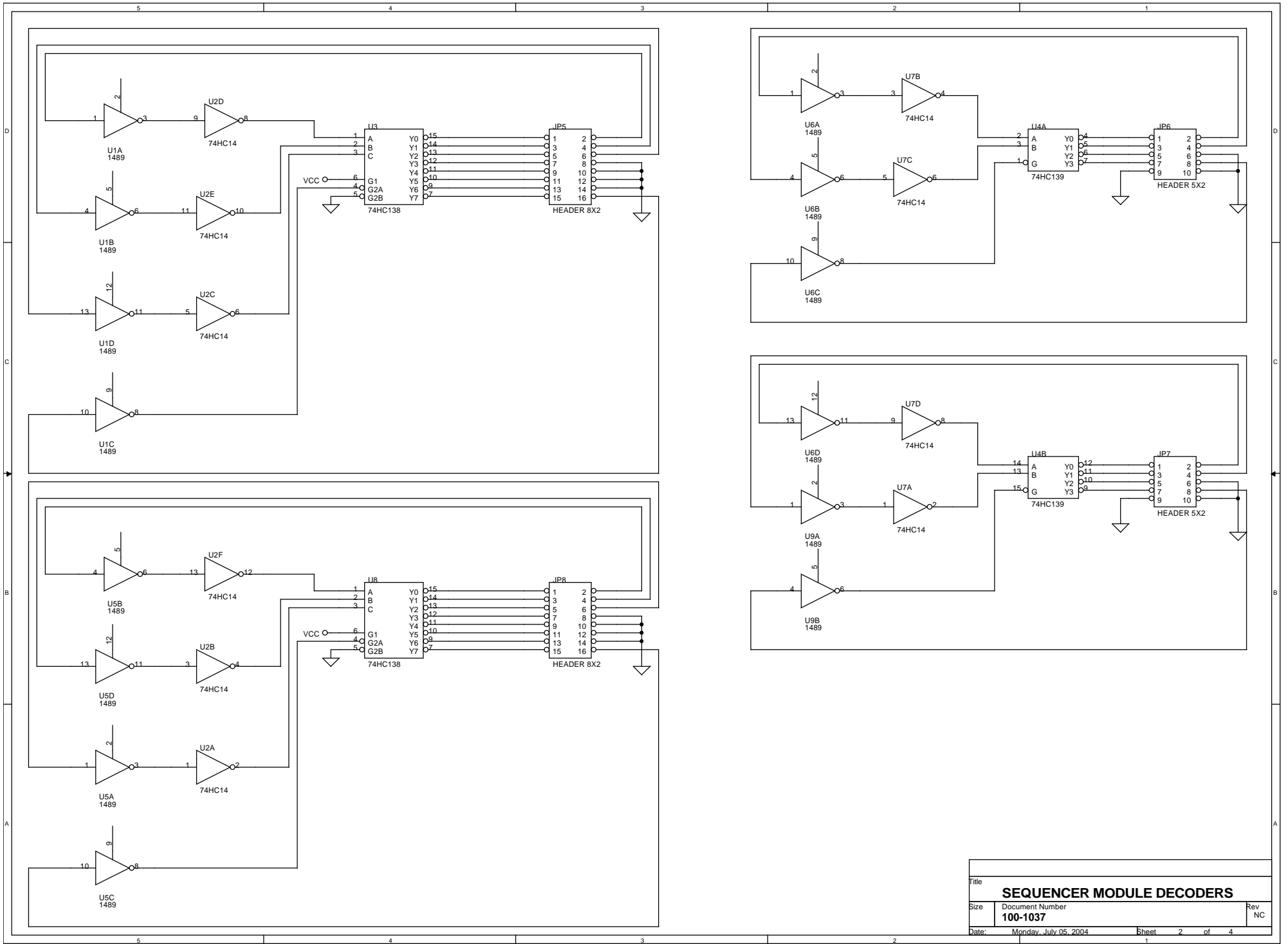
18:

200-1039-06 REV NC FAB DRAWING
200-1039-05 REV NC COMPONENT SIDE LEGEND
200-1039-02 REV NC COMPONENT SIDE

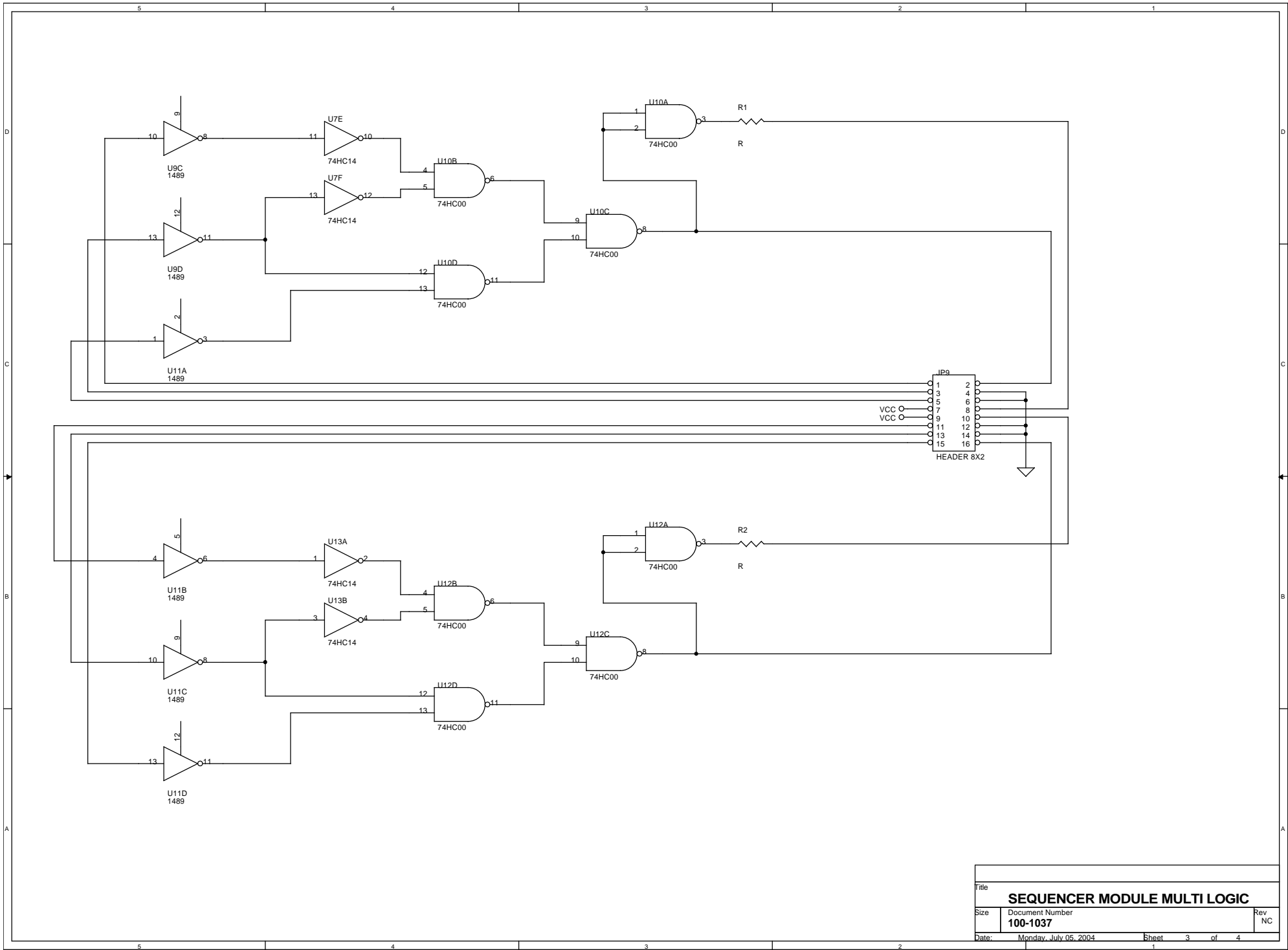




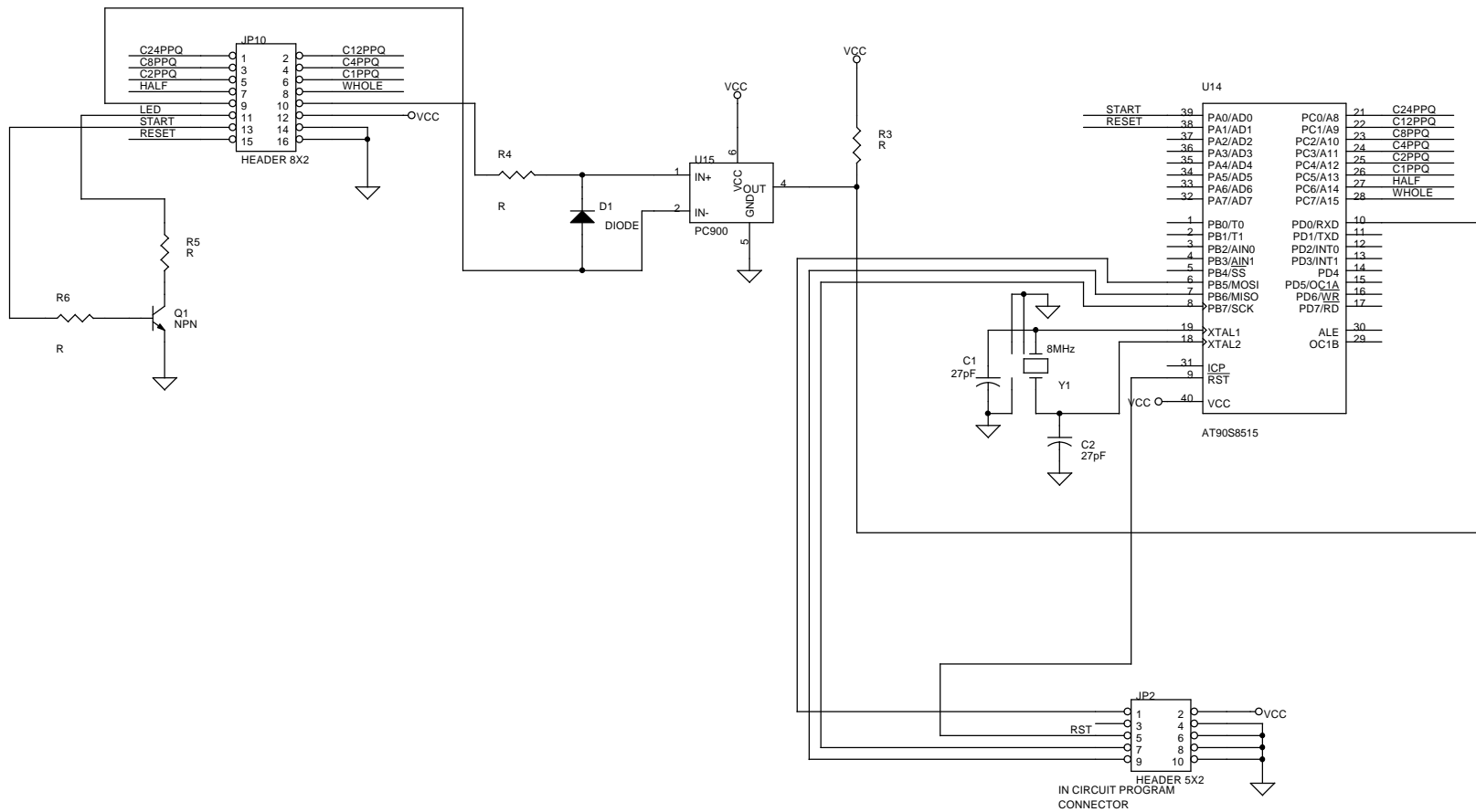
Title		
SEQUENCER MODULE-MIDI/DECODERS		
Size	Document Number	Rev
	100-1037	NC
Date:	Monday, July 05, 2004	Sheet 1 of 4



Title		
SEQUENCER MODULE DECODERS		
Size	Document Number	Rev
	100-1037	NC
Date:	Monday, July 05, 2004	Sheet 2 of 4



Title		
SEQUENCER MODULE MULTI LOGIC		
Size	Document Number	Rev
	100-1037	NC
Date:	Monday, July 05, 2004	Sheet 3 of 4



1: SEQUENCER MODULE-MIDI/DECODERS Revised: Monday, July 05, 2004
2: 100-1037 Revision: NC
3:
4:
5:
6:
7:
8:
9:

10: Bill Of Materials July 5,2004 15:56:44 Page1

11:

12: Item Quantity Reference Part

13: _____

14:

15: 1 2 C1,C2 27pF
16: 2 18 C3,C4,C5,C6,C7,C8,C9,C10, .1uF
17: C11,C12,C13,C14,C15,C16,
18: C17,C18,C19,C20
19: 3 1 D1 DIODE
20: 4 3 JP2,JP6,JP7 HEADER 5X2
21: 5 2 JP4,JP3 HEADER 4
22: 6 4 JP5,JP8,JP9,JP10 HEADER 8X2
23: 7 1 Q1 NPN
24: 8 6 R1,R2,R3,R4,R5,R6 R
25: 9 5 U1,U5,U6,U9,U11 1489
26: 10 3 U2,U7,U13 74HC14
27: 11 2 U3,U8 74HC138
28: 12 1 U4 74HC139
29: 13 2 U10,U12 74HC00
30: 14 1 U14 AT90S8515
31: 15 1 U15 PC900
32: 16 1 Y1 8MHz
33:

